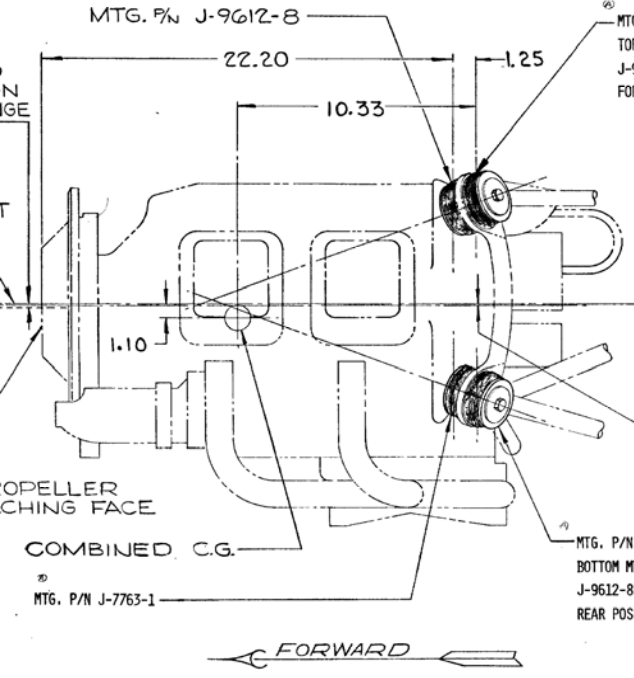


AND DISTRIBUTE THIS DRAWING ONLY TO FACILITATE USE AND MAINTENANCE
 RIGHTS ARE GRANTED. FUTURE REVISIONS AVAILABLE ONLY ON REQUEST.

D S-6411 A

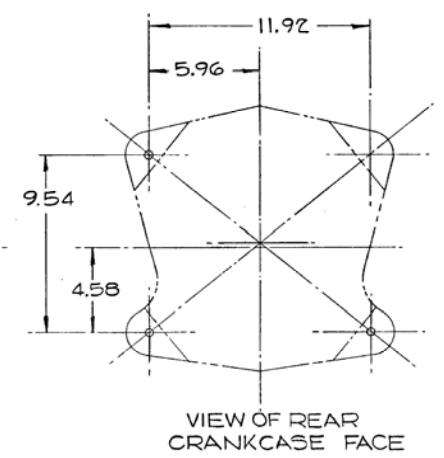
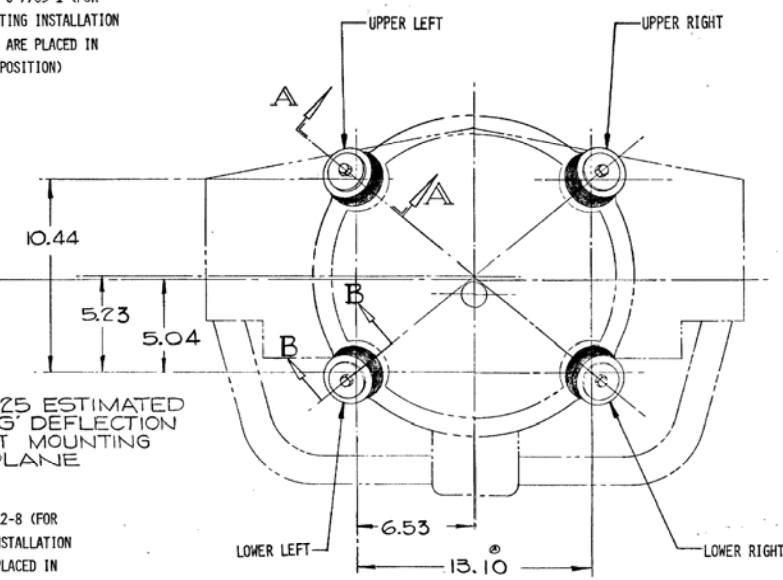
LET. ALTERA
 A 36188



MTG. P/N J-7763-1 (FOR TOP MOUNTING INSTALLATION J-9612-8 ARE PLACED IN FORWARD POSITION)

MTG. P/N J-9612-8 (FOR BOTTOM MOUNTING INSTALLATION J-9612-8 ARE PLACED IN REAR POSITION)

.025 ESTIMATED 1" G' DEFLECTION AT MOUNTING PLANE



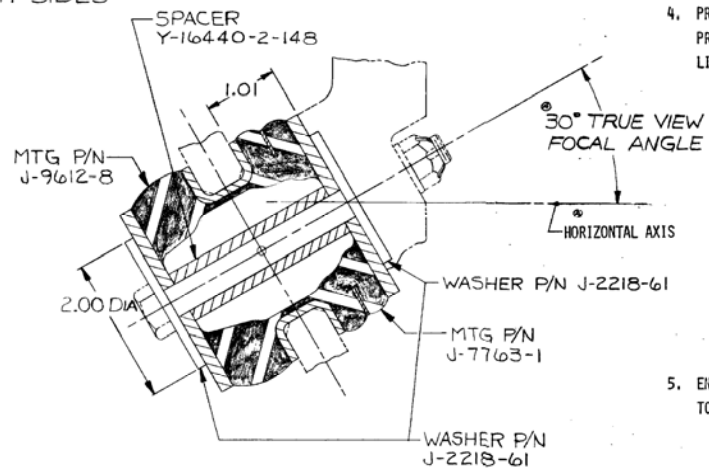
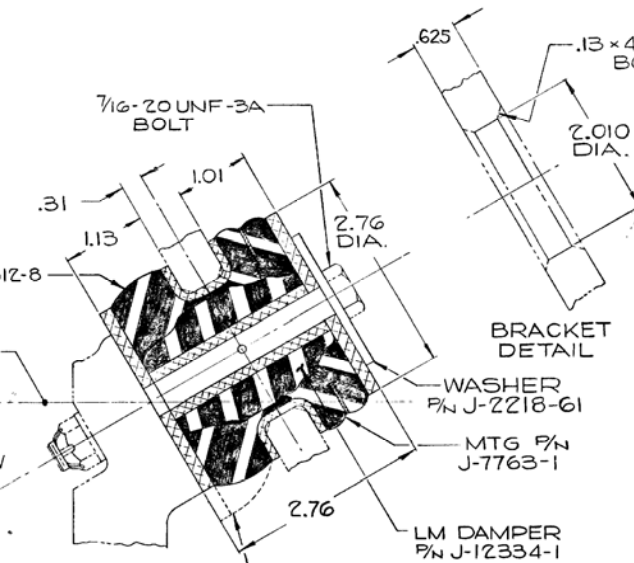
NOTES:

1. MOUNTINGS SHOWN PRECOMPRESSED BUT UNDER ZERO GRAVITY, TORQUE & THRUST LOAD.
2. SYSTEM DIMENSIONS ARE TO THE CENTER OF THE AIRFRAME AND/OR ENGINE BRACKET.
3. ONE ENGINE SET CONSISTS OF TWO J-9613-40 MOUNTING KITS AND TWO J-9613-53 MOUNTING KITS. THE J-9613-40 KIT CONSISTS OF ONE J-9612-8 MOUNTING, ONE J-7763-1 MOUNTING, ONE J-12334-1 LM DAMPER AND ONE J-2218-61 WASHER AND IS INSTALLED IN THE UPPER LEFT AND LOWER RIGHT POSITIONS AS SEEN FROM THE REAR VIEW OF THE CRANKCASE FACE. THE J-9613-53 KIT CONSISTS OF ONE J-9612-8 MOUNTING, ONE J-7763-1 MOUNTING, ONE Y-16440-2-148 SPACER, ONE J-2218-61 WASHER AND ARE TO BE INSTALLED IN THE UPPER RIGHT AND LOWER LEFT POSITION AS SEEN FROM THE REAR VIEW OF THE CRANKCASE FACE.
4. PROVISIONS FOR THE FOLLOWING DISPLACEMENT OF ENGINE SHOULD BE ALLOWED TO PREVENT SHORT CIRCUITING THE VIBRATION ISOLATORS, BREAKING OF EXTERNAL LINES OR BINDING CONTROLS:

1 "G" PLUS TAKE-OFF TORQUE & THRUST
 GRAVITY - .07 IN. @ C.G. PLUS 0° - 11° NOSE DOWN PITCH
 TORQUE - 0° 48' COUNTER CLOCKWISE ROTATION
 THRUST - .029 IN. @ C.G.

MAXIMUM MOTIONS
 TORSIONAL ROLL FROM VERTICAL --- ± 3° 9'
 PITCH ROTATION --- ± 2° 23'
 YAW ROTATION --- ± 1°-48'
 LATERAL DISPLACEMENT --- ± .10 IN. @ C.G.
 THRUST DISPLACEMENT --- ± .08 IN. @ C.G.
 VERTICAL DISPLACEMENT --- + .35 IN. @ C.G. PLUS 0° - 57' NOSE DOWN PITCH
 --- .18 IN. @ C.G. PLUS 0° - 29' NOSE UP PITCH

5. ENGINE AND AIRFRAME DIMENSIONS ARE FOR REFERENCE ONLY. FOR DESIGN PURPOSES REFER TO ENGINE MANUFACTURERS INSTALLATION DRAWING.



SECTION B-B
 P/N J-9613-53 USED IN UPPER RIGHT & LOWER LEFT MOUNTING POSITIONS)

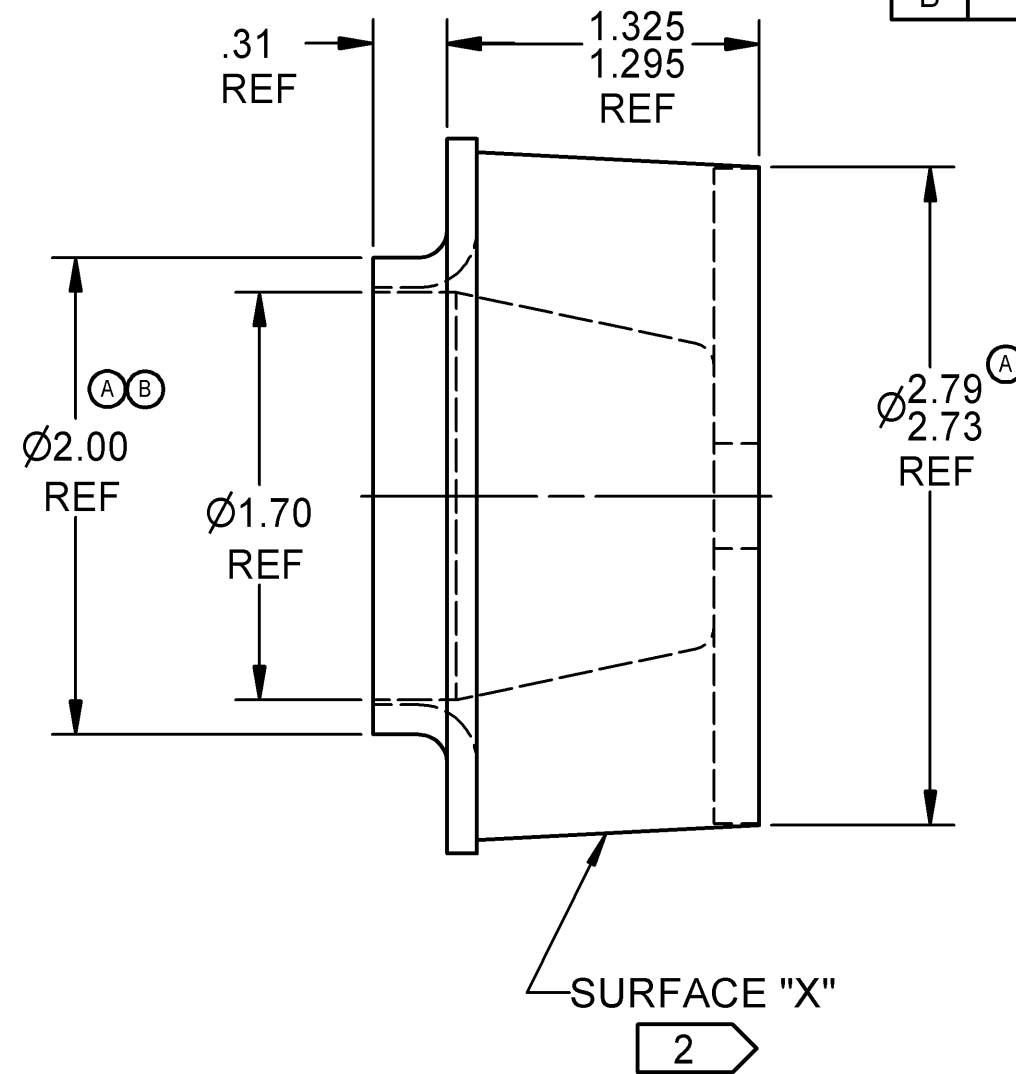
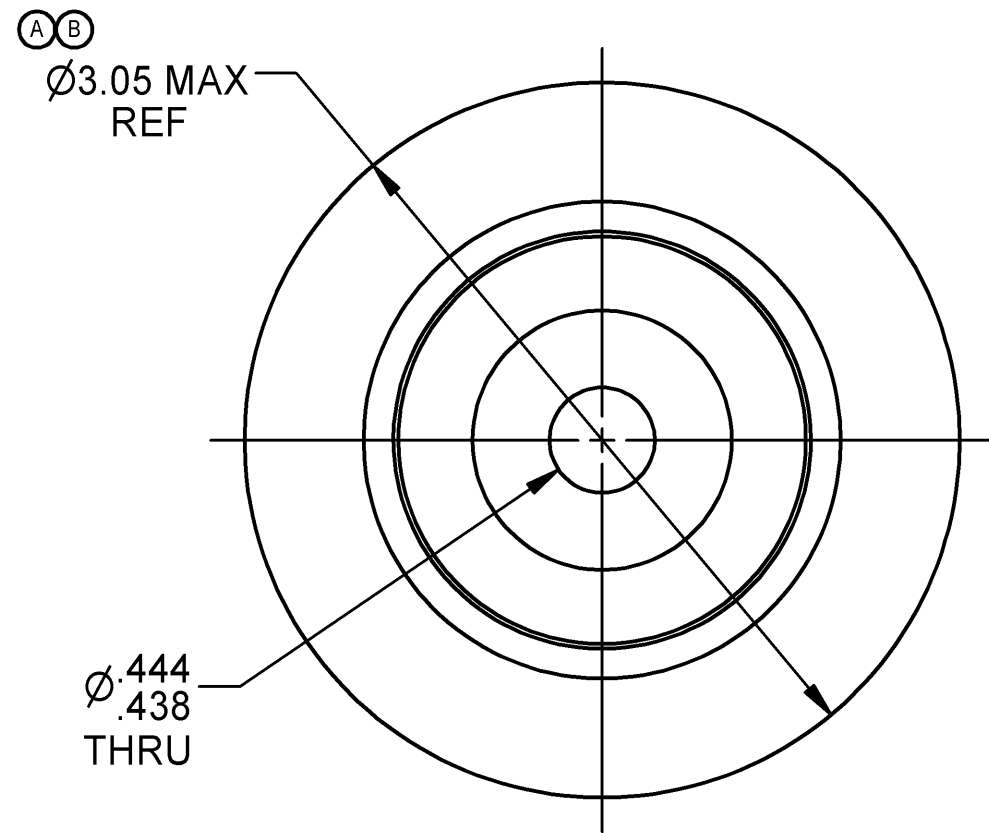
SECTION A-A (TOP)
 P/N J-9613-40 USED IN UPPER LEFT & LOWER RIGHT MOUNTING POSITIONS)

PARTS LIST FOR ENGINE	
UPPER LEFT & LOWER RIGHT MTG. POINTS	2 PCS. J-9613-40
UPPER RIGHT & LOWER LEFT MTG. POINTS	2 PCS. J-9613-53
	2 PCS. J-2218-61

UNLESS OTHERWISE SPECIFIED ALL DIMENSIONS IN INCHES BREAK SHARP EDGES & REMOVE BURRS DO NOT SCALE DRAWING TOLERANCES: .001 DECIMALS ± .015 FRACTIONS ± .001 ANGLES ± 2°

LORD Dynamics
 DYNAFOCAL INST
 LYCOMING O
 DR. Q. M. ... AUG 1, 1972
 APP. ...
 CHG. ...

LET.	ALTERATION	DR.	CHECKED BY
A	110104	JMM	RGO 3-14-05
B	110234	DAJ	RGO 11-28-05



NOTES: (UNLESS OTHERWISE SPECIFIED)

- MATERIAL AND FINISH:
 - A. MAJOR METALS - ALUMINUM ALLOY, ANODIZED
 - B. ELASTOMER - NATURAL RUBBER
- "LORD[®] ERIE PA MADE IN USA J-9612-8", CURE DATE "() () - () ()" (MO AND YR) EMBOSSED ON SURFACE "X" IN .09/.03 HIGH CHARACTERS.

J-9612-8
LORD P/N

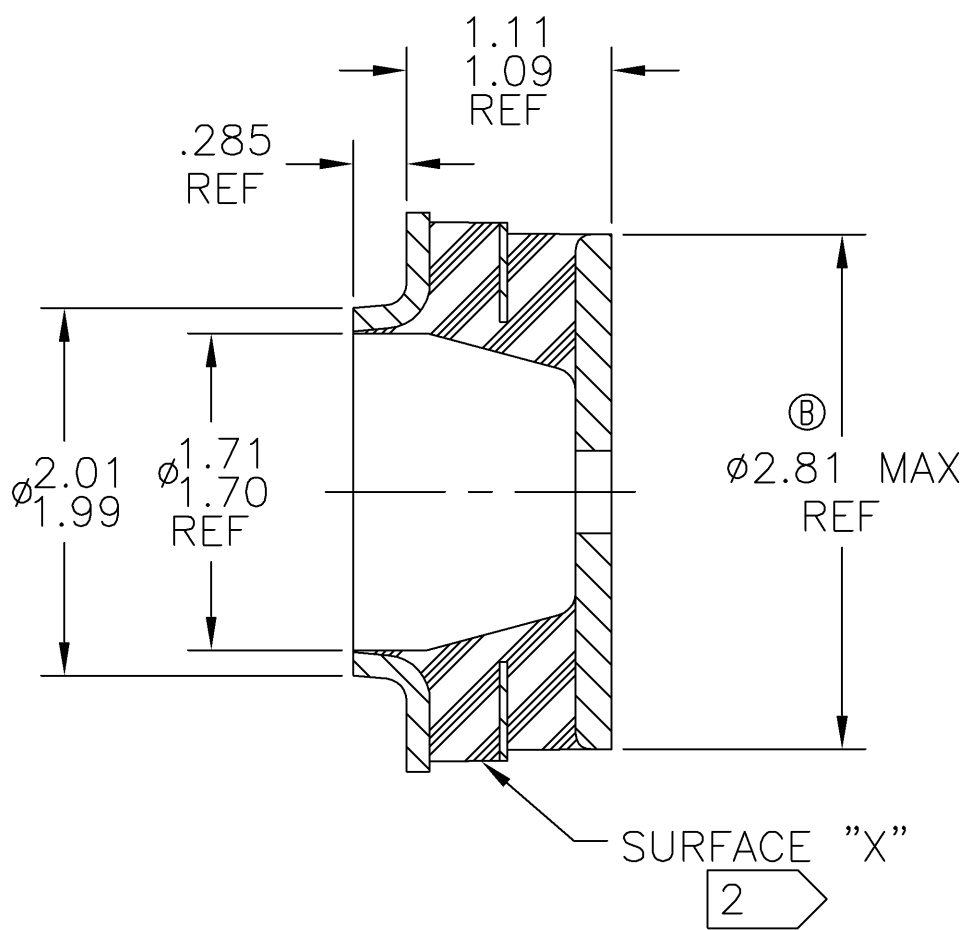
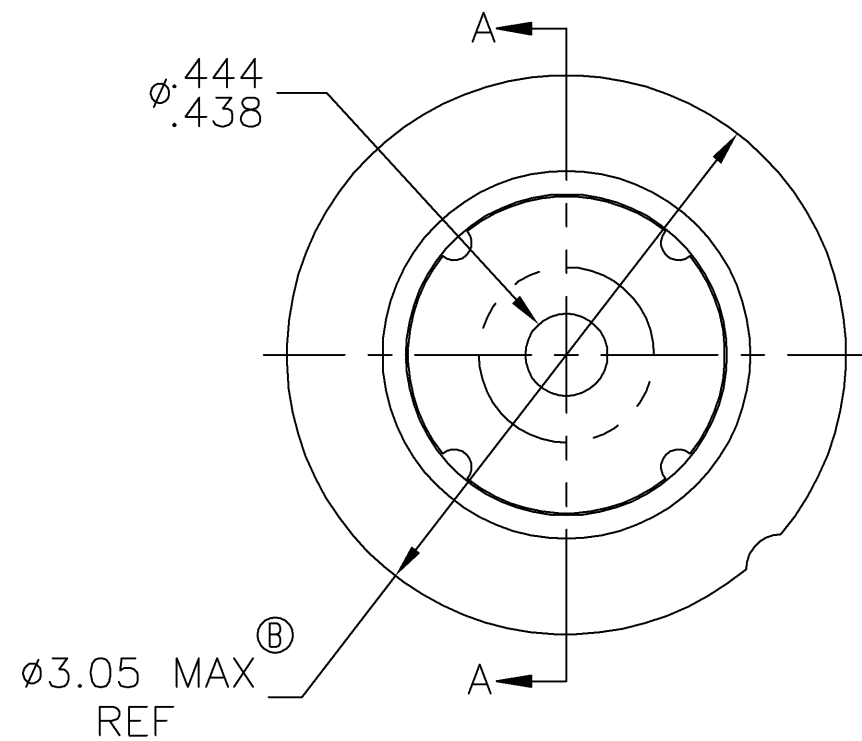
PROPRIETARY NOTICE		UNLESS OTHERWISE SPECIFIED		LORD CORPORATION Erie, Pa. 16514-0040		DWG TYPE	DIV	
THE INFORMATION CONTAINED HEREIN IS PROPRIETARY TO LORD CORPORATION AND SHALL NOT BE REPRODUCED OR DISCLOSED IN WHOLE OR IN PART OR USED FOR ANY DESIGN OR MANUFACTURE EXCEPT WHEN SUCH USER POSSESSES DIRECT, WRITTEN AUTHORIZATION FROM LORD CORPORATION.		F.M.P. = FOR MANUFACTURING PURPOSES ALL DIMENSIONS ARE TO POINTS OF INTERSECTION DIMENSIONING/TOLERANCING PER ASME Y14.5M - 1994 ABBREVIATIONS, ACRONYMS, TERMINOLOGY PER TS-027 MACHINED SURFACES = 125 MICROINCHES MAX BREAK ALL SHARP EDGES .025/.005 AVERAGING OF DIAMETERS NOT PERMISSIBLE ALL DIMENSIONS ARE IN INCHES DIMENSIONS IN [] ARE IN MILLIMETERS		DR. BY	J.M.CHESSARIO 10-20-92	SANDWICH MOUNTING BONDED	CC	A
				CKD. BY	R.G.OBERACKER 10-21-92			
				ENGR. APPR.	P.J.SNYDER 10-21-92			
				MFG. APPR.		CAGE	SIZE	DRAWING NO.
Q.E. APPR.		76005	B	J-9612-8	B			
CALC. WT. (LB.)	ELASTOMER VOL (CU. IN.)			SH	1	OF	1	

LORD PROPRIETARY

LORD PROPRIETARY

THE INFORMATION CONTAINED HEREIN IS PROPRIETARY TO LORD CORPORATION AND SHALL NOT BE REPRODUCED OR DISCLOSED IN WHOLE OR IN PART OR USED FOR ANY DESIGN OR MANUFACTURE EXCEPT WHEN SUCH USER POSSESSES DIRECT, WRITTEN AUTHORIZATION FROM LORD CORPORATION.

AUTODESK		1	
LET.	ALTERATION	DR.	CK.
B	110347	JAG	RG0 10/21/05



SECTION A-A

NOTES: (UNLESS OTHERWISE SPECIFIED)

- MATERIALS AND FINISH:
MAJOR METALS - ALUMINUM ALLOY, ANODIZED
ELASTOMER - NATURAL RUBBER
- "LORD® ERIE PA MADE IN USA J-7763-1"
AND CURE DATE "() () - () ()" (MO AND YR)
EMBOSSSED ON SURFACE "X" IN .12/.06 HIGH
CHARACTERS.
- EACH UNIT WILL BE INDIVIDUALLY PACKAGED
"FAA/PMA"
"LORD CORP 76005"
"J-7763-1"
"MOONEY M20E (S/N 470 THRU 21-1180),
M20F (S/N 670001 THRU 22-1438),
M20J (S/N 24-001 AND UP)"

J-7763-1
PART NO.

UNLESS OTHERWISE SPECIFIED		LORD ® MECHANICAL PRODUCTS Erie, Pa. 16514-0040				
F.M.P. = FOR MANUFACTURING PURPOSES ALL DIMENSIONS ARE TO POINTS OF INTERSECTION DIMENSIONING/TOLERANCING PER ASME Y14.5M - 1994 ABBREVIATIONS, ACRONYMS, TERMINOLOGY PER TS-027 MACHINED SURFACES = 250 MICROINCHES BREAK ALL SHARP EDGES AVERAGING OF DIAMETERS NOT PERMISSIBLE ALL DIMENSIONS ARE IN INCHES DIMENSIONS IN () ARE IN MILLIMETERS		DR. BY J.M.CHESSARIO 10-20-92	BONDED SANDWICH MOUNTING			
		CKD. BY R.G.OBERACKER 10-21-92				
		ENGR. APPR. P.J.SNYDER 10-21-92				
CALC. WT. (LB.)	ELASTOMER VOL (CU. IN.)	MFG. APPR.	CAGE 76005	SIZE B	DRAWING NO. J-7763	REV B
		Q.E. APPR.	SH 1	OF 1		

A
CC
A



